



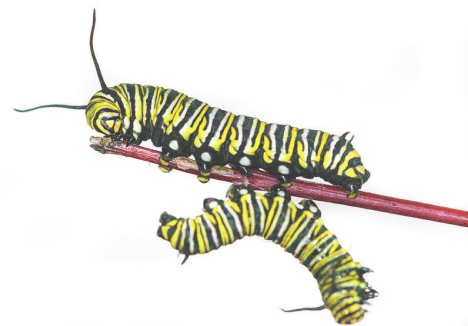
The Monarch Butterfly is one of North America's most iconic insects. The golden-brown and black butterfly is the most celebrated insect on the continent. Their migration is spectacular and can be up to 2,000 miles one way with butterflies flying south to Mexico in late summer. Did you know that our very own Lake Erie is part of their migration path?

However, Monarch populations have declined in recent years. Residents report seeing less butterflies each summer. Experts say that 90% of the eastern Monarch population has diminished over the past twenty years.

Monarchs returning to America in early March rely on newly emerging milkweed plants to lay their eggs. Once they hatch, the offspring colonize and continue migrating north until the end of the season when they return to Mexico.

These insects depend on milkweeds as host plants. Eggs are deposited on plants which then provide nutrition for the caterpillar phase of the lifecycle.

With your help, we can do our part to save the Monarchs. Look for milkweed seed pods in your neighborhood and donate them to the Cleveland Seed Bank today!





# Saving Milkweed Seeds

---

Milkweed is an Ohio native that is the sole host of the Monarch caterpillar. Monarchs are becoming increasingly threatened due to habitat loss and the use of herbicide. Saving milkweed seed and creating beneficial habitat is a simple way to contribute to the effort to help save Monarchs!

**1**

Harvest milkweed seed pods from the plant when they are dry, gray or brown in color, and splitting at the center seam. If the center seam pops with gentle pressure, the pod can be collected. Do not pick the pods when they are green because the seeds are not viable yet.

Collect milkweed pods in paper bags and label the bag with your county and the date seed was collected. Avoid using plastic bags because they retain moisture and possibly damage the seed. Store in a cool, dry place until you bring them to the seed bank.

**2**

**3**

Drop the labeled bags at any of the Cleveland Seed Bank drop off locations. Or, schedule a time to drop off your seeds at our office.



Thanks for supporting your local seed bank!  
[www.clevelandseedbank.org](http://www.clevelandseedbank.org)